

Quick Start Setup

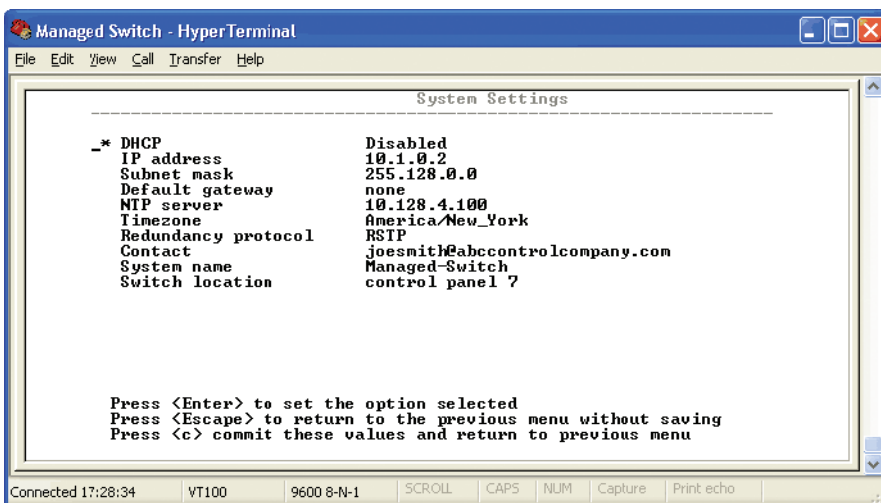
For Terminal User Interface

Quick Start Guide to Terminal User Interface

As an alternative to the web interface, you can use this guide to quickly configure the switch through the RS232 Port or the USB Port.

Note: This interface is for more advanced users. Using the Web interface described in the beginning of this manual is the recommended method.

1. Connect the serial port of your PC (typically a female DB9 connector) to the serial port of the switch (female RJ45 connector) or connect a USB cable from a USB port on your PC to the USB port on the Switch (Refer to the USB driver installation guide). Contact Ultra Electronics, NSPI to purchase a pre-wired interface cable or USB cable if necessary.
2. Configure a terminal program (such as HyperTerminal) for 9600, 8N1 and no flow control. See Section further below for more details.
3. Type 'admin' for the login name and 'admin' for the password.
4. Choose the appropriate terminal emulation setting that is supported by your terminal program.
5. Navigation of the character interface is done by using the arrow keys to highlight the option, the Enter key to select, and the Escape key to go back to the previous menu. Pressing 'c' will commit the changes. Press 'x' from the main menu to logout.
6. Selecting Quick Setup brings up the System Settings menu. This menu is used to configure the IP address (DHCP or static), subnet mask, redundancy protocol, system name, contact, and location information.



7. Set the desired IP address and subnet that are compatible with the network for which this switch will reside, or you can enable DHCP. Select "c" to activate your new settings.
8. Now you can access the switch via the web interface or you can continue to make configuration changes using this text interface.

9. Using the text interface you can do the following:
 - a. The default administrative password can be changed from the Remote Access Security menu.
 - b. The individual ports on the switch are configured to a set of defaults and auto-selects that should get you started quickly with no necessary configuration. Customizing the port settings by enabling/disabling a port, choosing the speed, duplex, or flow control is accessed from the Port Configuration menu.
 - c. The Rapid Spanning Tree Protocol (RSTP) is disabled by default in the switch. The RSTP settings can be changed from the from Redundancy Settings screens.
 - d. Check the operational status of the switch by accessing the Monitoring menu.
 - e. The modem and PPP settings are found in the Remote Access Settings menu.

Using Microsoft HyperTerminal

- Configure Microsoft Windows HyperTerminal for use with the switch as follows:
- Create a new connection by choosing New Connection from the FILE menu.
- In the CONNECTION DESCRIPTION dialog, give the connection a name such as "Managed Switch" and click OK.
- In the CONNECT TO dialog, choose the correct COM port.
- In the COM PROPERTIES dialog, choose the following settings:
 - 9600 bits per second (Bps or Baud)
 - 8 data bits, no parity, 1 stop bit
 - no flow control.
- Click OK.
- Open the CONNECTION PROPERTIES dialog by choosing PROPERTIES from the FILE menu.
- Click on SETTINGS to raise the setting tab.
- Select VT100 from the Emulation list.
- Click TERMINAL SETUP.
- In TERMINAL SETTINGS, check CURSOR KEYPAD MODE & hit OK.
- Click OK to close the CONNECTION PROPERTIES dialog.

Once the terminal screen comes up the switch prompts for a login name. It may be necessary to press Enter once or twice to see the login prompt. The default login user and password are both 'admin'. After the login and password prompts, select VT100 by pressing 4 and then Enter. The main administrative menu will now appear and the managed switch is now ready for full configuration.

Ultra Electronics

NUCLEAR SENSORS & PROCESS INSTRUMENTATION

707 Jeffrey Way, PO Box 300
Round Rock, TX 78680-0300 USA

Tel: +1 512 434 2850

Fax: +1 512 434 2901

e-mail: fiberop@ultra-nspi.com

www.ultra-nspi.com

*Ultra Electronics, Nuclear Sensors & Process Instrumentation
is a business name of Weed Instrument Co., Inc.*

Ultra Electronics reserves the right
to vary these specifications
without notice.

© Ultra Electronics 2010.

Printed in the USA.

03/10