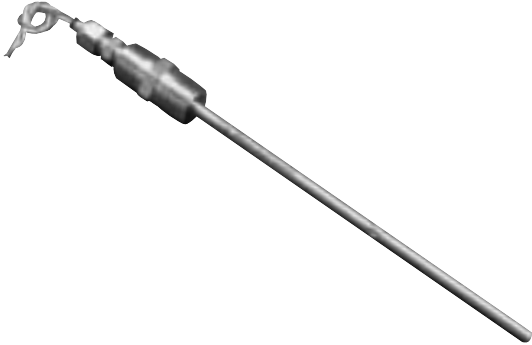
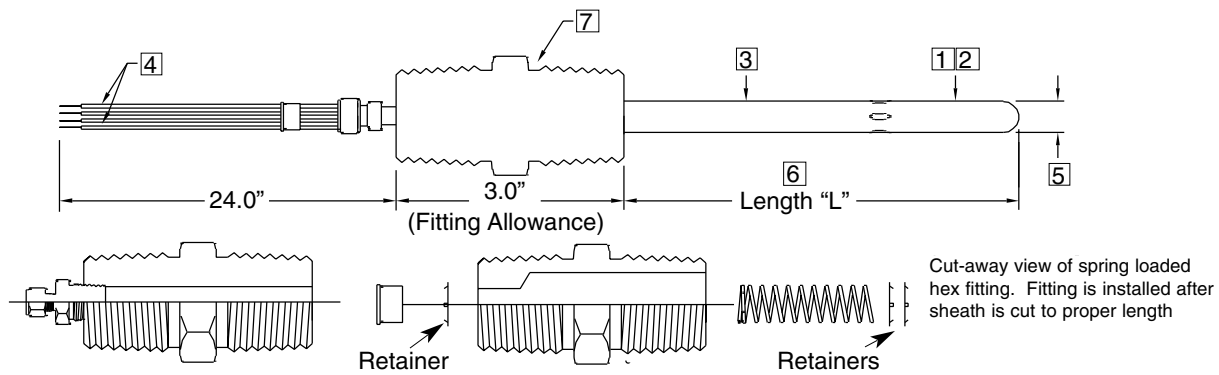


## Model 110 Field Cuttable RTD

Designed for applications where a threaded male fitting is required for mounting in tanks, stacks, pressure vessels. Stocking “cuttables” can reduce inventory and down time as the 110 can be easily cut to the required length in the field and a fitting can be installed in a matter of minutes.



**Model 110** is designed to be used with optional connector or spring-loaded fitting.



Data Sheet

### Specifications:

1. Base Model:	Base model/series number.		
2. A. Accuracy:	Standard	Class B (no code)	
	High	Class A (code H)	
	Special	Customer Specified (code S)	
B. TCR:	* Industry Standard is DIN Curve (code 01B), Platinum, 100 ohms @ 0°C. Conforms to IEC 751, ITS-90. Temperature Coefficient of Resistance is the temperature vs. resistance characteristics of a given metal (Pt, Cu & Ni) used in manufacturing the RTD. Determines the curve of the RTD.		
C. Ice Point Resistance:	$R_0$ - Resistance at 0°C (32°F)		
3. Construction:	Code A - 316SS tube and wire construction, thin film element (.00385055), Teflon insulated lead wire. Code C - 316SS tube and wire construction, wire wound element, fiberglass insulated lead wire.		
4. Lead Wires:	 4 - Wire	 6 - Wire (Dual 3-Wire)	 8 - Wire (Dual 4-Wire)
5. Sheath Diameter:	.250" (1/4") is the industry standard.		
6. Sheath Length:	Entire cuttable length plus 2 1/4" nominal tip.		
7. Optional Fittings:	Sensor is not supplied with mounting hardware, specify optional fitting.		
8. Tube Cutter:	Optional tube cutter.		



Rev. 0204

[www.weedinstrument.com](http://www.weedinstrument.com)

Model	Description		
<b>110</b>	<b>Field Cuttable RTD</b>		
<b>1</b>	<b>Code</b>	<b>R<sub>0</sub> &amp; Temperature Coefficient</b>	
	<b>01B</b>	<b>100 ohm Platinum .00385055 TCR 100 ohms @ 0° C - Industry Standard</b>	
	01A	100 ohm Platinum .003902 TCR 100 ohms @ 0° C	
	10A	1000 ohm Platinum .003902 TCR 1000 ohms @ 0° C	
	10B	1000 ohm Platinum .00385055 TCR 1000 ohms @ 0° C	
	12N	120 ohm Nickel .00672 TCR 120 ohms @ 0° C	
	09C	10 ohm Copper (9.035) .004274 TCR 10 ohms @ 25° C	
	Add Code "H" for higher accuracy Add Code "S" for special accuracy Add Code "M_" for matched pair. For matching type, see RTD General Specifications.		
	<b>2</b>	<b>Code</b>	<b>Construction Temperature Limit</b>
		A	500 F° Maximum
	C	900 F° Maximum (Platinum Only)	
<b>3</b>	<b>Code</b>	<b>Number of Lead Wires</b>	
	4	4-Wire (Complete Compensation)	
	6	Dual 3-Wire (with dual element)	
	8	Dual 4-Wire (with dual element)	
<b>4</b>	<b>Code</b>	<b>Sheath Diameter</b>	
	C	.250" (1/4") Diameter	
<b>5</b>	<b>Code</b>	<b>Sheath Length</b>	
	24	24" (27" Overall)	
	48	48" (51" Overall)	
	Other	Consult Factory	
<b>6</b>	<b>Code</b>	<b>Optional Fittings</b>	
	C1S	Compression: 1/4" Sheath x 1/8" NPT SS	
	C2S	1/4" Sheath x 1/4" NPT SS	
	C3S	1/4" Sheath x 1/2" NPT SS	
	NS1	1/4" Sheath x 1/2" NPT Hex Nipple	
	FS5	Spring-Loaded: 1/4" Sheath 1/2" X 1/2" Hex Fitting with Adjustable Fluid Seal	
310	1/2" X 1/2" Hex Fitting Kit		
	Other	Consult Factory	
<b>7</b>	<b>Code</b>	<b>Option</b>	
	TC1	Tube Cutter	
<b>8</b>			

110	-	01B	-	A	-	4	-	C	-	24	/	NS1	/
	-		-		-		-		-		/		/

Sample Model Number

Your Model Number

