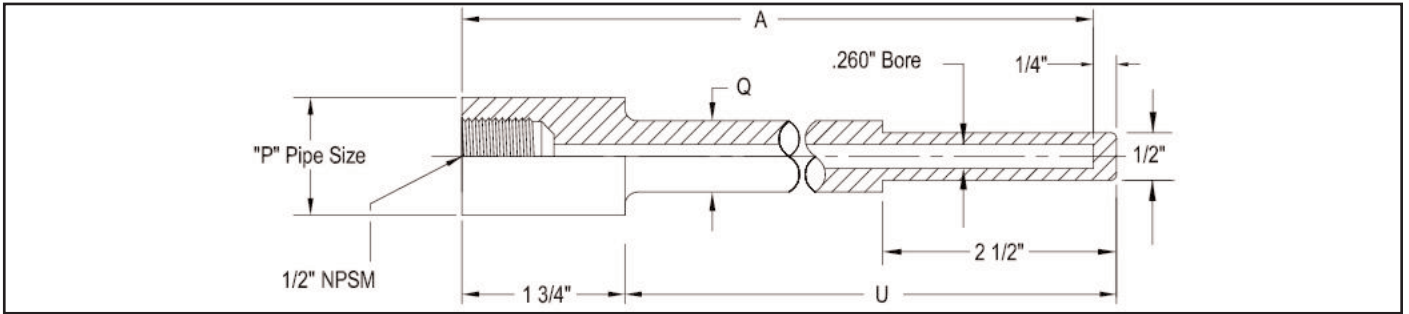
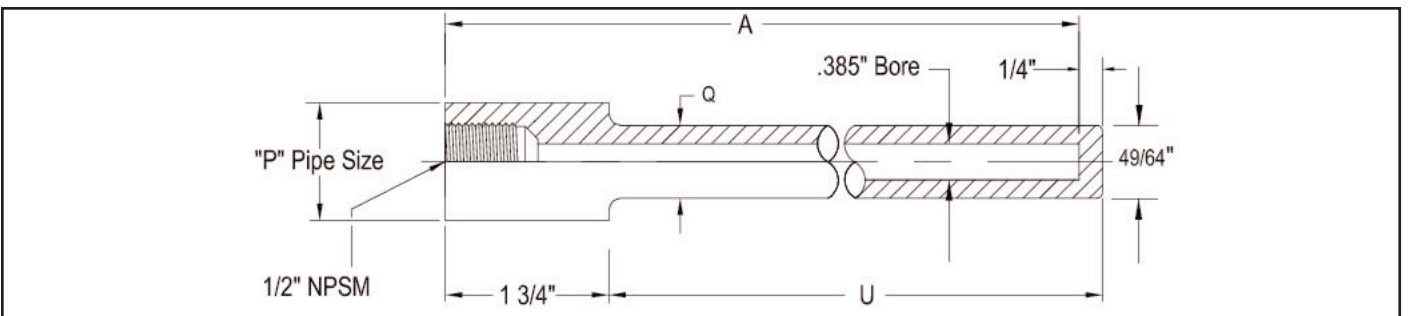


Socket Weld Thermowells Standard (W) and Heavy Duty (WH)

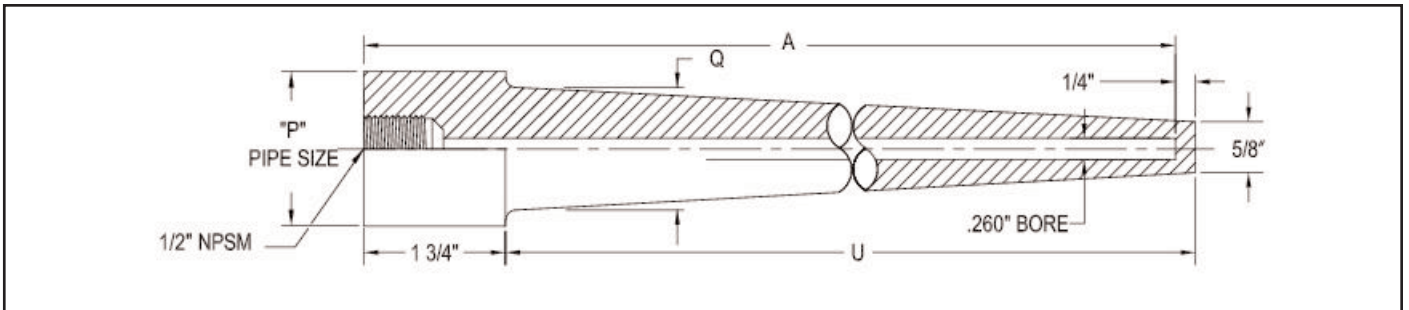
Available in 260 bore for 1/4" diameter sensors and 385 bore for 3/8" diameter sensors.



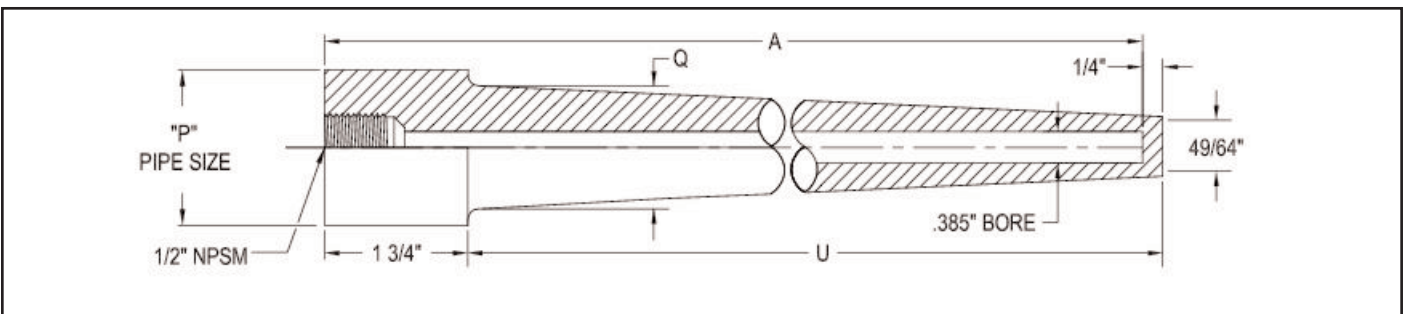
Standard Duty Socket Weld (W), .260" Bore (Stepped)



Standard Duty Socket Weld (W) .385" Bore (Straight)



Heavy Duty Socket Weld (WH) .260" Bore (Tapered)



Heavy Duty Socket Weld (WH) .385" Bore (Tapered)

Process Connection	Socket Weld Pipe Size (nominal)		
3/4	3/4"	(1.050" Diameter)	
1	1"	(1.315" Diameter)	
	Model	Bore and Thermowell Type	
	W260	.260" Bore - Standard Duty Socket Weld	
	W385	.385" Bore - Standard Duty Socket Weld	
	WH260	.260" Bore - Heavy Duty Socket Weld	
	WH385	.385" Bore - Heavy Duty Socket Weld	
	Insertion Length	Stem Length "A"	Insertion Length "U"
	U2 1/2	4"	2 1/2"
	U4 1/2	6"	4 1/2"
	U7 1/2	9"	7 1/2"
	U10 1/2	12"	10 1/2"
	U13 1/2	15"	13 1/2"
	U16 1/2	18"	16 1/2"
	U22 1/2	24"	22 1/2"
	Other	Consult Factory	
	Material	Thermowell Material	
	316SS	AISI-316 SS - Standard	
	304SS	AISI-304 SS	
	Brass	Brass	
	CS	Carbon Steel	
	Monel	Monel 400	
	Other	Consult Factory	

3/4	-	W260	-	U4 1/2	-	316SS	Sample Model Number
-	-	-	-	-	-	-	Your Model Number

Specifications:

Process Connection "P":	3/4" (1.050" nominal) & 1" (1.315" nominal) pipe size are standard.
Thermowell Style:	Specify style and bore.
Insertion Length "U":	From bottom of socket to tip of thermowell . Standard sizes listed - other sizes available.
Materials:	Standard materials listed - others available. Refer to the Corrosive Service Guide in the Thermowell General Specifications to determine suitable material for specific application.
Instrument Connection Size:	1/2" NPSM internal thread is standard (1/2" or 3/4" NPT available).
Cap & Chain:	Brass cap and chain is available for keeping well bore clean when not in use. Add "CC" to the end of your model number to order this option.

